

ATTACHMENT A

ATTACHMENT A

ARCHITECTURAL PLANS

HAROLD PARK - STAGE 2 - PRECINCT 2



FIG. 2. CITY SKYLINE VIEWS



FIG. 3. CLIFF FACE AND LANDSCAPE



FIG. 4. ROW OF DWELLINGS



FIG. 5. HAROLD PARK HOTEL



FIG. 6. RECENT RESIDENTIAL DEVELOPMENT



FIG. 7. VIEW OF TERRACES ACROSS FROM HAROLD PARK

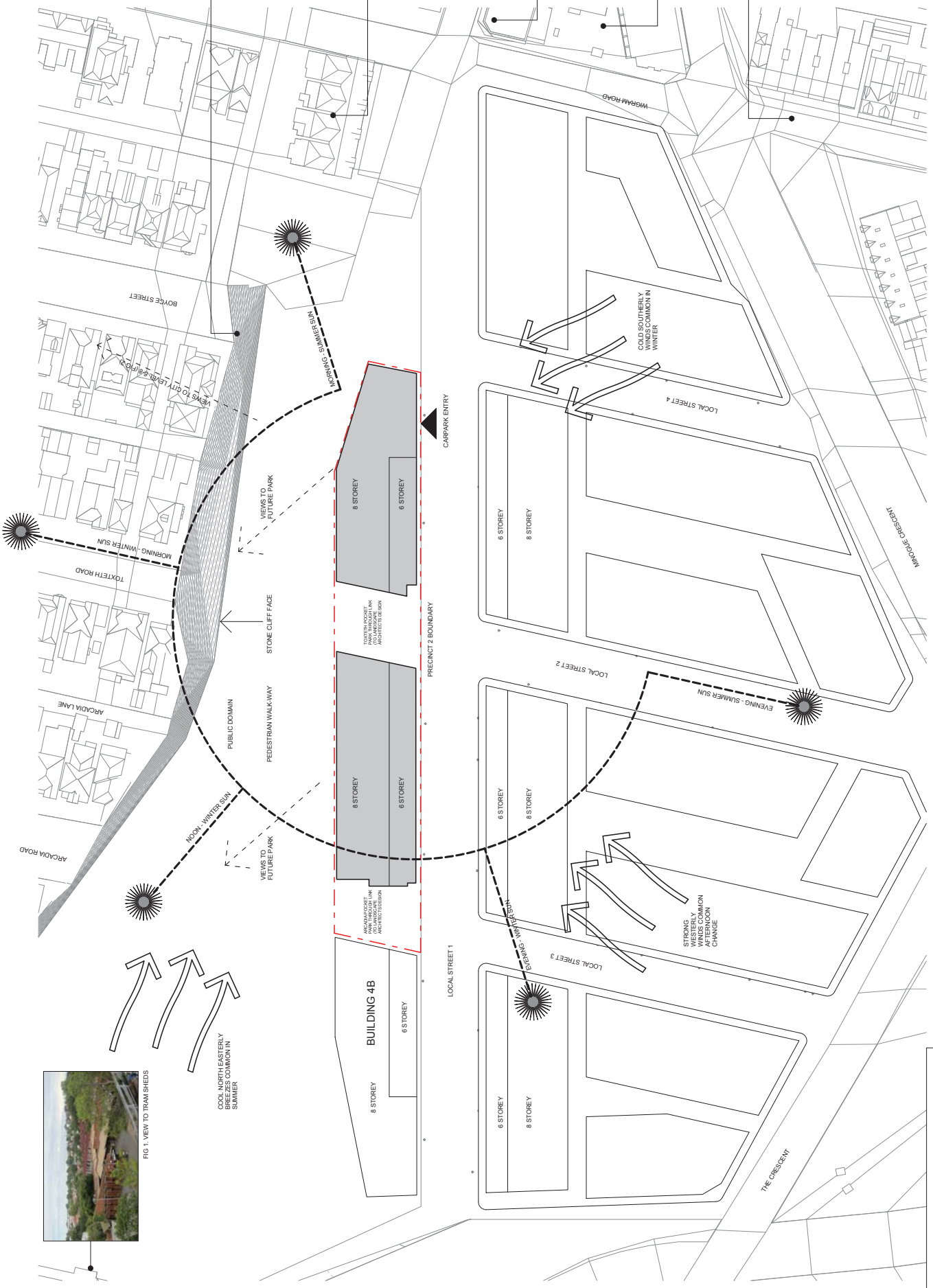
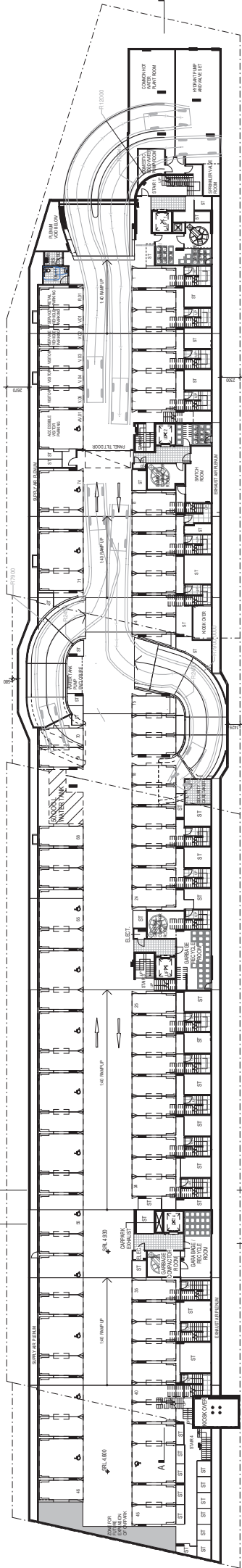


FIG. 1. VIEW TO TRAM SHEDS

COOL NORTHEASTERLY BREEZES COMMON IN SUMMER

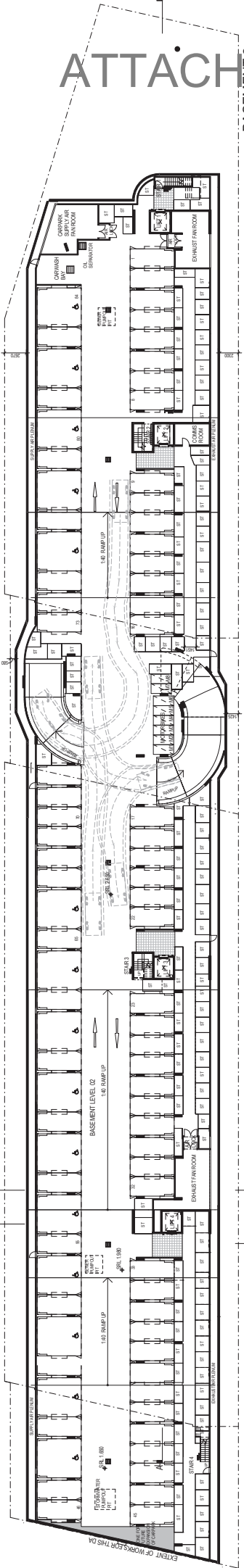
STRONG WESTERLY WINDS COMMON AFTERNOONS CHANGE

DISCLAIMER
 The information contained in this document is for the use of the client only. It is not to be used for any other purpose without the written consent of the architect. The architect is not responsible for the accuracy or completeness of the information provided by the client. The architect is not responsible for the accuracy or completeness of the information provided by the client. The architect is not responsible for the accuracy or completeness of the information provided by the client.



BASEMENT 1

Basement 1	Basement 2	Total
Aliphatic spaces	13	15
Other spaces	61	69
Subtotal	74	84
Additional	6	0
Visitors	0	8
Motorcycles	0	1
Car wash bays	0	1
Rash	1	0
Bicycle Storage cages	47	137
		184



BASEMENT 2

ATTACHMENT A



PROJECT: Harold Park - Precinct 2
CLIENT: Mirvac

DATE: 15/08/2012
DATE: 15/08/2012
DATE: 15/08/2012

REVISIONS:

NO.	DATE	DESCRIPTION
01	15/08/2012	Issue for Client Review
02	15/08/2012	Issue for Client Review
03	15/08/2012	Issue for Client Review

DESIGNER: Hassell
ARCHITECT: Mirvac
ENGINEER: [Logo]
CONSULTANT: [Logo]

DEVELOPMENT APPLICATION
Basements

DATE: 15/08/2012
DATE: 15/08/2012
DATE: 15/08/2012

PROJECT NO.: 1752
DATE: Feb 12
SCALE: @ B1: 1:200
DRAWING NO.: DA-P2-10 rev: D

ATTACHMENT A



Scale: 1:200
 Date: Feb 12
 Job no: 1752
 Drawn by: B1
 Rev: D

DEVELOPMENT APPLICATION
Level 01 & 02

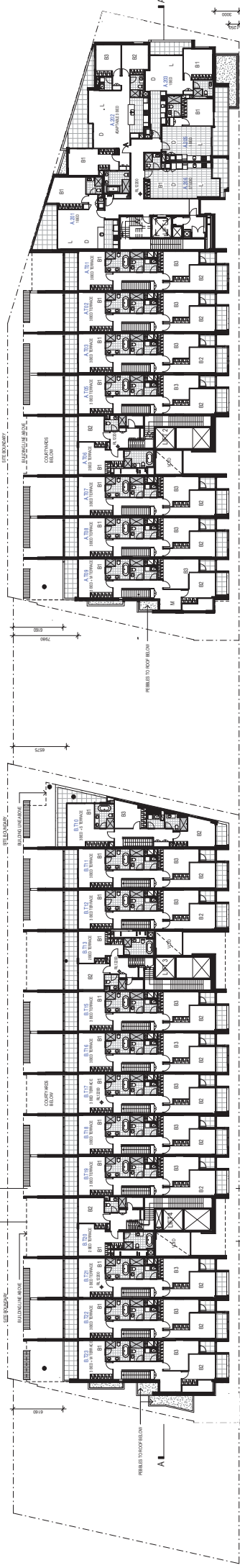


MIRVAC
 Client: Harold Park - Precinct 2
 Location: Geelong, NSW

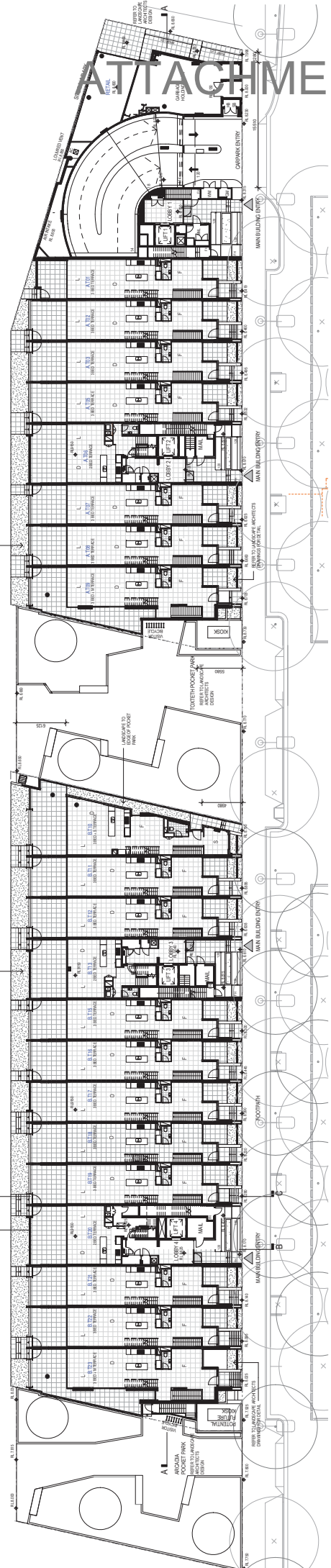
Project: Harold Park - Precinct 2
 Geelong, NSW

Architect: Mirvac
 Date: 17/02/12
 Drawn by: B1
 Checked by: D

Room Name Legend
 A: Apartment
 B: Bedroom
 C: Kitchen
 D: Living
 E: Bathroom
 F: En-suite
 G: Laundry
 H: Storage
 I: Hallway
 J: Staircase
 K: Lift
 L: Lobby
 M: Shop
 N: Office
 O: Storage
 P: Storage
 Q: Storage
 R: Storage
 S: Storage
 T: Storage
 U: Storage
 V: Storage
 W: Storage
 X: Storage
 Y: Storage
 Z: Storage



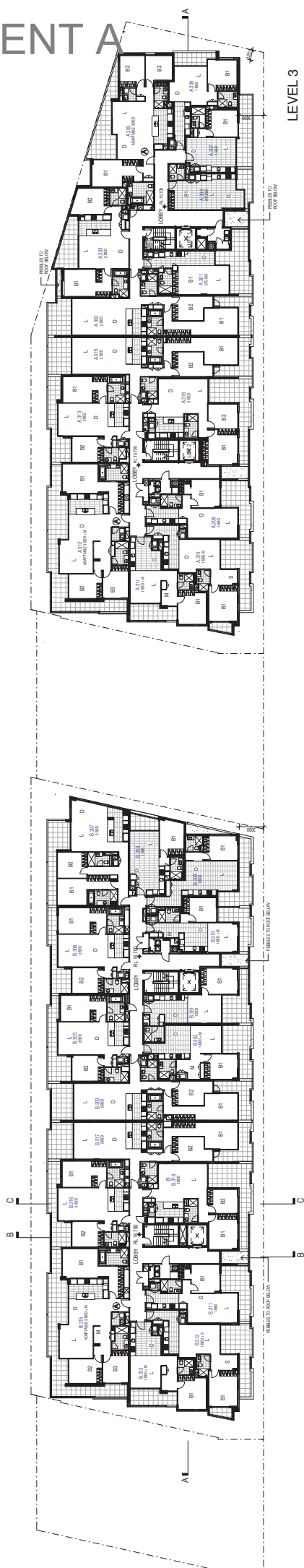
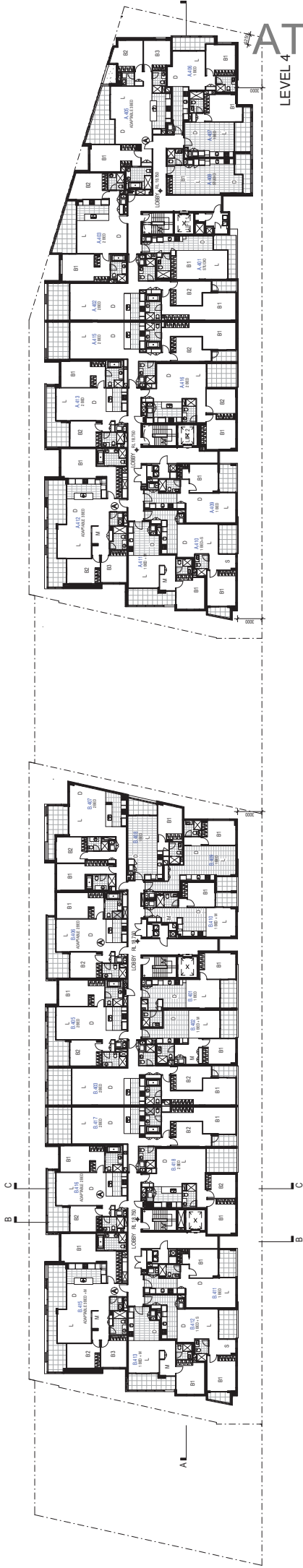
LEVEL 2



Room Name Legend
 A: Apartment
 B: Bedroom
 C: Kitchen
 D: Living
 E: Bathroom
 F: En-suite
 G: Laundry
 H: Storage
 I: Hallway
 J: Staircase
 K: Lift
 L: Lobby
 M: Shop
 N: Office
 O: Storage
 P: Storage
 Q: Storage
 R: Storage
 S: Storage
 T: Storage
 U: Storage
 V: Storage
 W: Storage
 X: Storage
 Y: Storage
 Z: Storage

Architectural Notes
 1. All dimensions are in millimeters unless otherwise stated.
 2. All work is to be in accordance with the Australian Standards.
 3. All materials to be used are to be of a quality suitable for the intended use.
 4. All work is to be completed in accordance with the program of works.
 5. All work is to be completed in accordance with the specifications.
 6. All work is to be completed in accordance with the drawings.
 7. All work is to be completed in accordance with the contract documents.
 8. All work is to be completed in accordance with the relevant legislation.
 9. All work is to be completed in accordance with the relevant codes of practice.
 10. All work is to be completed in accordance with the relevant standards.

ATTACHMENT A



Room Name Legend

- Available Apartment
- B2 Bedroom 2
- B3 Bedroom 3
- B4 Bedroom 4
- C Courtyard
- D DEX Day Day-Evening
- EN Ensuite
- F Family
- K Kitchen
- L Living
- M Master Bedroom
- PK Park
- S Study
- ... Other

NOTES

1. This drawing is a component of a larger project and should be read in conjunction with the other drawings.
2. The information on this drawing is based on the information provided by the client and is not to be used for any other purpose.
3. The information on this drawing is not to be used for any other purpose.
4. The information on this drawing is not to be used for any other purpose.
5. The information on this drawing is not to be used for any other purpose.

PROJECT:
Harold Park - Precinct 2
Geelong, NSW

CLIENT:
mirvac

DESIGN:
Mirvac Design

ARCHITECT:
HASSSELL

DATE:
10th March 2012

SCALE:
1:200

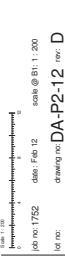
JOB NO:
1752

DATE:
Feb 12

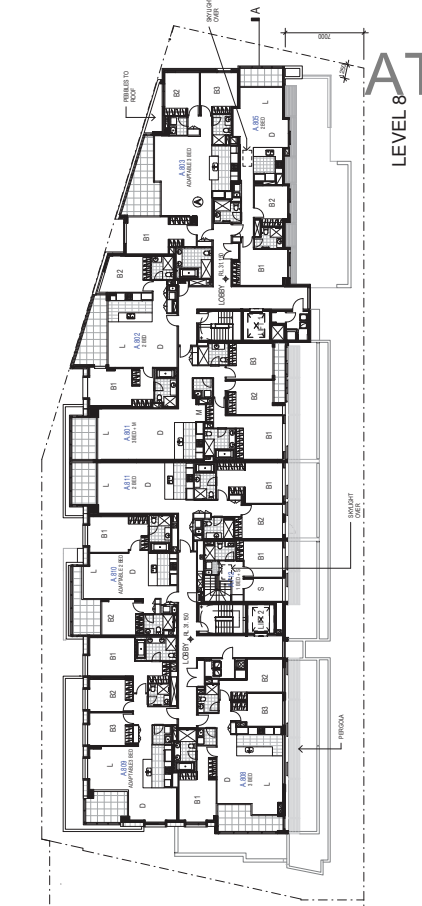
SCALE:
@ B1: 1:200

DRAWN BY:
DA-P2-12

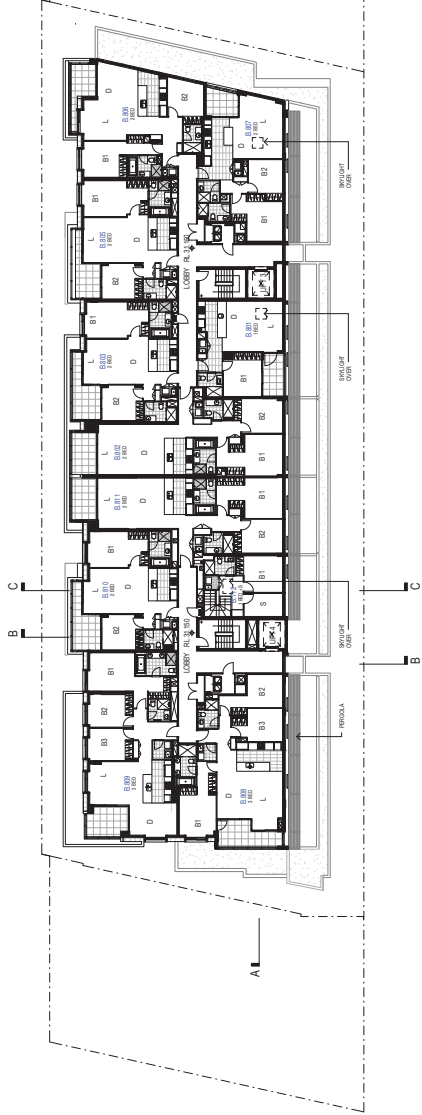
REV:
D



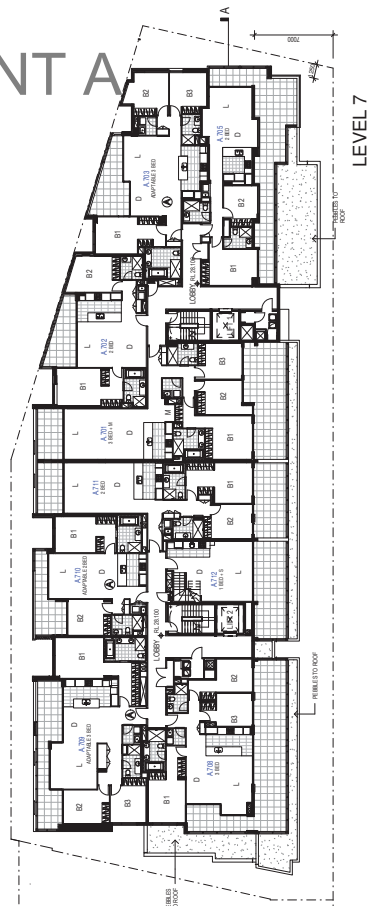
ATTACHMENT A



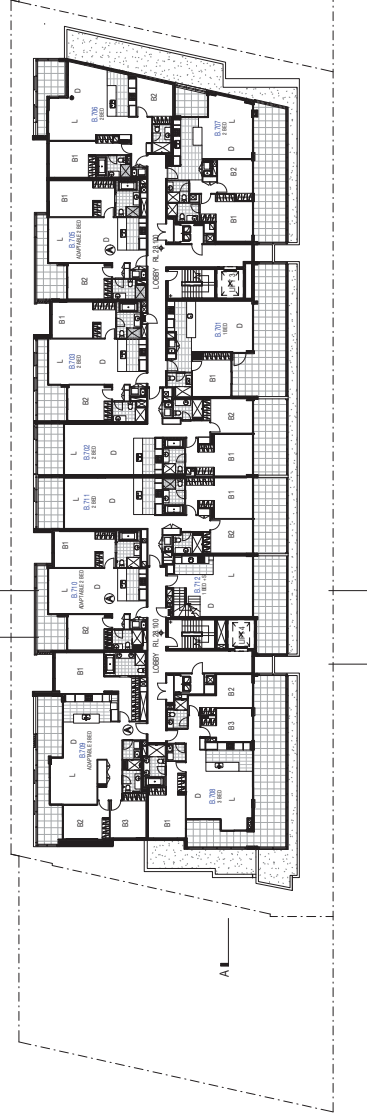
LEVEL 8



LEVEL 7



LEVEL 8



LEVEL 7

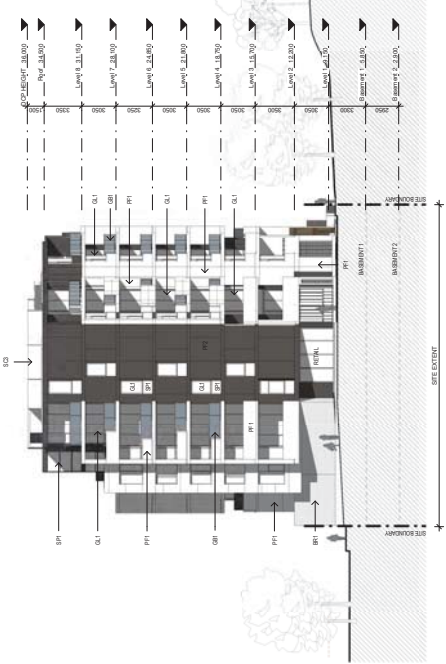
Room Name	Legend
Bedroom 1	B1
Bedroom 2	B2
Bedroom 3	B3
Bedroom 4	B4
Bedroom 5	B5
Bedroom 6	B6
Bedroom 7	B7
Bedroom 8	B8
Bedroom 9	B9
Bedroom 10	B10
Bedroom 11	B11
Bedroom 12	B12
Bedroom 13	B13
Bedroom 14	B14
Bedroom 15	B15
Bedroom 16	B16
Bedroom 17	B17
Bedroom 18	B18
Bedroom 19	B19
Bedroom 20	B20
Bedroom 21	B21
Bedroom 22	B22
Bedroom 23	B23
Bedroom 24	B24
Bedroom 25	B25
Bedroom 26	B26
Bedroom 27	B27
Bedroom 28	B28
Bedroom 29	B29
Bedroom 30	B30
Bedroom 31	B31
Bedroom 32	B32
Bedroom 33	B33
Bedroom 34	B34
Bedroom 35	B35
Bedroom 36	B36
Bedroom 37	B37
Bedroom 38	B38
Bedroom 39	B39
Bedroom 40	B40
Bedroom 41	B41
Bedroom 42	B42
Bedroom 43	B43
Bedroom 44	B44
Bedroom 45	B45
Bedroom 46	B46
Bedroom 47	B47
Bedroom 48	B48
Bedroom 49	B49
Bedroom 50	B50
Bedroom 51	B51
Bedroom 52	B52
Bedroom 53	B53
Bedroom 54	B54
Bedroom 55	B55
Bedroom 56	B56
Bedroom 57	B57
Bedroom 58	B58
Bedroom 59	B59
Bedroom 60	B60
Bedroom 61	B61
Bedroom 62	B62
Bedroom 63	B63
Bedroom 64	B64
Bedroom 65	B65
Bedroom 66	B66
Bedroom 67	B67
Bedroom 68	B68
Bedroom 69	B69
Bedroom 70	B70
Bedroom 71	B71
Bedroom 72	B72
Bedroom 73	B73
Bedroom 74	B74
Bedroom 75	B75
Bedroom 76	B76
Bedroom 77	B77
Bedroom 78	B78
Bedroom 79	B79
Bedroom 80	B80
Bedroom 81	B81
Bedroom 82	B82
Bedroom 83	B83
Bedroom 84	B84
Bedroom 85	B85
Bedroom 86	B86
Bedroom 87	B87
Bedroom 88	B88
Bedroom 89	B89
Bedroom 90	B90
Bedroom 91	B91
Bedroom 92	B92
Bedroom 93	B93
Bedroom 94	B94
Bedroom 95	B95
Bedroom 96	B96
Bedroom 97	B97
Bedroom 98	B98
Bedroom 99	B99
Bedroom 100	B100
Living Room	L
Dining Room	D
Kitchen	K
Bathroom	B
Wardrobe	W
Laundry	L
Storage	S
Service	SERV
Other	Other

WEST ELEVATION - STREET SIDE

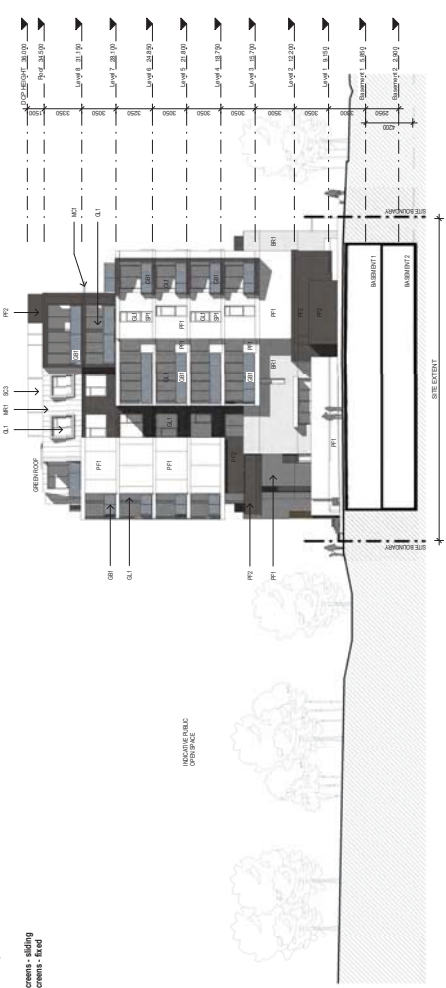


EXTERNAL FINISHES

- WALLS**
 BR1 Face brick work
 BR2 Applied wall finish - White or similar
 BR3 Applied wall finish - Dark Grey or similar
 FC1 Feature cladding
 FC2 Feature cladding
 FC3 Feature cladding
 FC4 Feature cladding
 FC5 Feature cladding
 FC6 Feature cladding
 FC7 Feature cladding
 FC8 Feature cladding
 FC9 Feature cladding
 FC10 Feature cladding
 FC11 Feature cladding
 FC12 Feature cladding
 FC13 Feature cladding
 FC14 Feature cladding
 FC15 Feature cladding
 FC16 Feature cladding
 FC17 Feature cladding
 FC18 Feature cladding
 FC19 Feature cladding
 FC20 Feature cladding
 FC21 Feature cladding
 FC22 Feature cladding
 FC23 Feature cladding
 FC24 Feature cladding
 FC25 Feature cladding
 FC26 Feature cladding
 FC27 Feature cladding
 FC28 Feature cladding
 FC29 Feature cladding
 FC30 Feature cladding
 FC31 Feature cladding
 FC32 Feature cladding
 FC33 Feature cladding
 FC34 Feature cladding
 FC35 Feature cladding
 FC36 Feature cladding
 FC37 Feature cladding
 FC38 Feature cladding
 FC39 Feature cladding
 FC40 Feature cladding
 FC41 Feature cladding
 FC42 Feature cladding
 FC43 Feature cladding
 FC44 Feature cladding
 FC45 Feature cladding
 FC46 Feature cladding
 FC47 Feature cladding
 FC48 Feature cladding
 FC49 Feature cladding
 FC50 Feature cladding
 FC51 Feature cladding
 FC52 Feature cladding
 FC53 Feature cladding
 FC54 Feature cladding
 FC55 Feature cladding
 FC56 Feature cladding
 FC57 Feature cladding
 FC58 Feature cladding
 FC59 Feature cladding
 FC60 Feature cladding
 FC61 Feature cladding
 FC62 Feature cladding
 FC63 Feature cladding
 FC64 Feature cladding
 FC65 Feature cladding
 FC66 Feature cladding
 FC67 Feature cladding
 FC68 Feature cladding
 FC69 Feature cladding
 FC70 Feature cladding
 FC71 Feature cladding
 FC72 Feature cladding
 FC73 Feature cladding
 FC74 Feature cladding
 FC75 Feature cladding
 FC76 Feature cladding
 FC77 Feature cladding
 FC78 Feature cladding
 FC79 Feature cladding
 FC80 Feature cladding
 FC81 Feature cladding
 FC82 Feature cladding
 FC83 Feature cladding
 FC84 Feature cladding
 FC85 Feature cladding
 FC86 Feature cladding
 FC87 Feature cladding
 FC88 Feature cladding
 FC89 Feature cladding
 FC90 Feature cladding
 FC91 Feature cladding
 FC92 Feature cladding
 FC93 Feature cladding
 FC94 Feature cladding
 FC95 Feature cladding
 FC96 Feature cladding
 FC97 Feature cladding
 FC98 Feature cladding
 FC99 Feature cladding
 FC100 Feature cladding
- GLAZING**
 GL1 Clear glass aluminium framed
 GL2 Clear glass aluminium framed
 GL3 Clear glass aluminium framed
 GL4 Clear glass aluminium framed
 GL5 Clear glass aluminium framed
 GL6 Clear glass aluminium framed
 GL7 Clear glass aluminium framed
 GL8 Clear glass aluminium framed
 GL9 Clear glass aluminium framed
 GL10 Clear glass aluminium framed
 GL11 Clear glass aluminium framed
 GL12 Clear glass aluminium framed
 GL13 Clear glass aluminium framed
 GL14 Clear glass aluminium framed
 GL15 Clear glass aluminium framed
 GL16 Clear glass aluminium framed
 GL17 Clear glass aluminium framed
 GL18 Clear glass aluminium framed
 GL19 Clear glass aluminium framed
 GL20 Clear glass aluminium framed
 GL21 Clear glass aluminium framed
 GL22 Clear glass aluminium framed
 GL23 Clear glass aluminium framed
 GL24 Clear glass aluminium framed
 GL25 Clear glass aluminium framed
 GL26 Clear glass aluminium framed
 GL27 Clear glass aluminium framed
 GL28 Clear glass aluminium framed
 GL29 Clear glass aluminium framed
 GL30 Clear glass aluminium framed
 GL31 Clear glass aluminium framed
 GL32 Clear glass aluminium framed
 GL33 Clear glass aluminium framed
 GL34 Clear glass aluminium framed
 GL35 Clear glass aluminium framed
 GL36 Clear glass aluminium framed
 GL37 Clear glass aluminium framed
 GL38 Clear glass aluminium framed
 GL39 Clear glass aluminium framed
 GL40 Clear glass aluminium framed
 GL41 Clear glass aluminium framed
 GL42 Clear glass aluminium framed
 GL43 Clear glass aluminium framed
 GL44 Clear glass aluminium framed
 GL45 Clear glass aluminium framed
 GL46 Clear glass aluminium framed
 GL47 Clear glass aluminium framed
 GL48 Clear glass aluminium framed
 GL49 Clear glass aluminium framed
 GL50 Clear glass aluminium framed
 GL51 Clear glass aluminium framed
 GL52 Clear glass aluminium framed
 GL53 Clear glass aluminium framed
 GL54 Clear glass aluminium framed
 GL55 Clear glass aluminium framed
 GL56 Clear glass aluminium framed
 GL57 Clear glass aluminium framed
 GL58 Clear glass aluminium framed
 GL59 Clear glass aluminium framed
 GL60 Clear glass aluminium framed
 GL61 Clear glass aluminium framed
 GL62 Clear glass aluminium framed
 GL63 Clear glass aluminium framed
 GL64 Clear glass aluminium framed
 GL65 Clear glass aluminium framed
 GL66 Clear glass aluminium framed
 GL67 Clear glass aluminium framed
 GL68 Clear glass aluminium framed
 GL69 Clear glass aluminium framed
 GL70 Clear glass aluminium framed
 GL71 Clear glass aluminium framed
 GL72 Clear glass aluminium framed
 GL73 Clear glass aluminium framed
 GL74 Clear glass aluminium framed
 GL75 Clear glass aluminium framed
 GL76 Clear glass aluminium framed
 GL77 Clear glass aluminium framed
 GL78 Clear glass aluminium framed
 GL79 Clear glass aluminium framed
 GL80 Clear glass aluminium framed
 GL81 Clear glass aluminium framed
 GL82 Clear glass aluminium framed
 GL83 Clear glass aluminium framed
 GL84 Clear glass aluminium framed
 GL85 Clear glass aluminium framed
 GL86 Clear glass aluminium framed
 GL87 Clear glass aluminium framed
 GL88 Clear glass aluminium framed
 GL89 Clear glass aluminium framed
 GL90 Clear glass aluminium framed
 GL91 Clear glass aluminium framed
 GL92 Clear glass aluminium framed
 GL93 Clear glass aluminium framed
 GL94 Clear glass aluminium framed
 GL95 Clear glass aluminium framed
 GL96 Clear glass aluminium framed
 GL97 Clear glass aluminium framed
 GL98 Clear glass aluminium framed
 GL99 Clear glass aluminium framed
 GL100 Clear glass aluminium framed
- SCREENING**
 SC1 External louvre screens - fixed
 SC2 External louvre screens - fixed
 SC3 Plant screening
 SC4 Metal pergola



2A-SOUTH

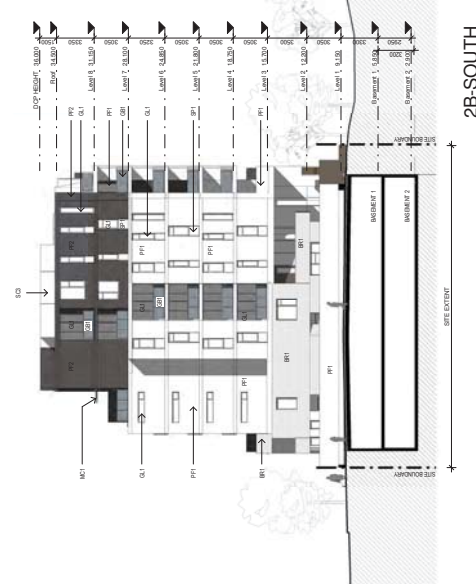


2B-NORTH

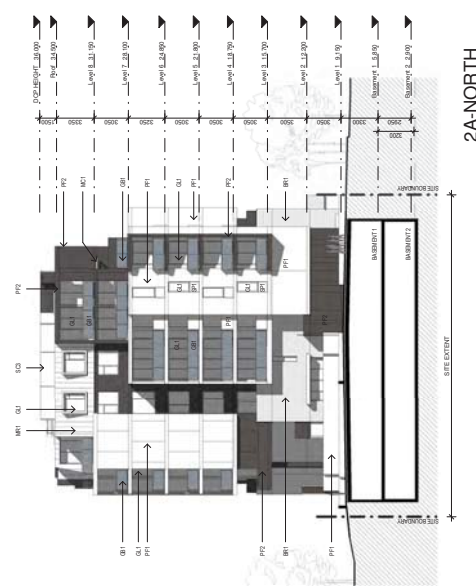
EAST ELEVATION - PARK SIDE



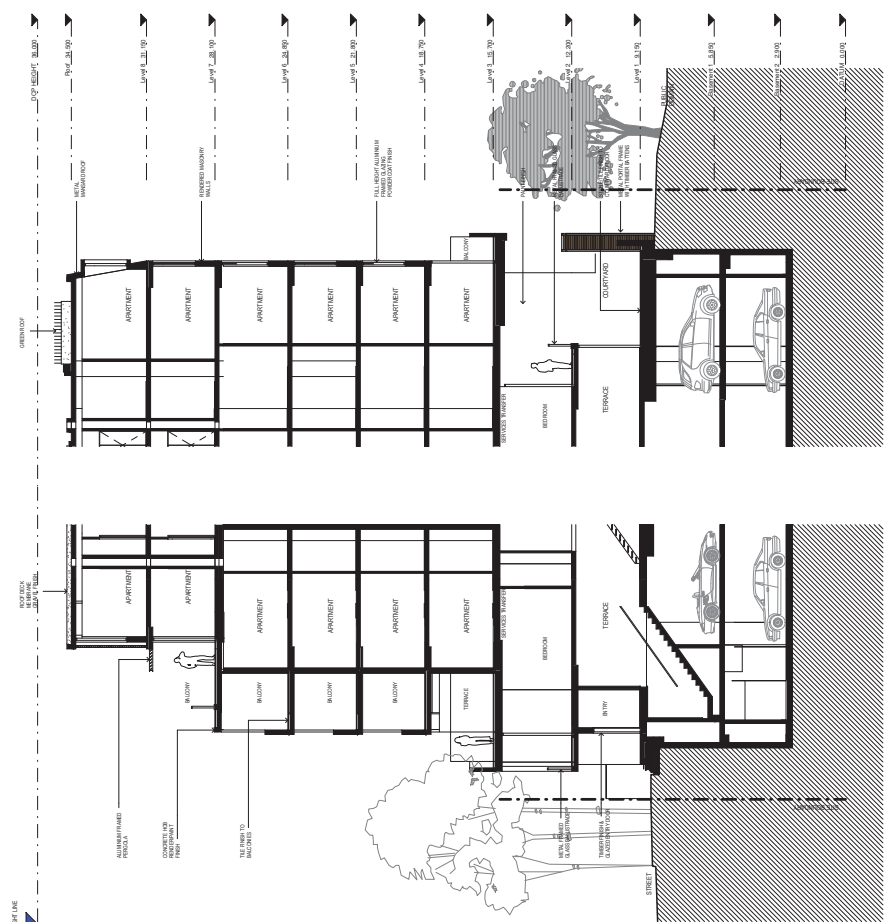
- EXTERNAL FINISHES**
- WALLS: Face brick work
 - P1: Applied wall finish - White or similar
 - P2: Applied wall finish - Dark Grey or similar
 - P3: Applied wall finish - Light Grey or similar
 - P4: Feature cladding
 - MRI: Metal Roof Cladding
 - S1: Stone finish
- GLAZING**
- GL1: Clear glass aluminium framed
 - SP1: Coloured glass spandrel panel
 - GR1: Clear glass framed balustrading
 - MR1: Metal framed aluminium
 - MR2: Metal framed balustrading
- SCREENINGS**
- SC1: External louvre screens - sliding
 - SC2: External louvre screens - fixed
 - MG: Metal pergola



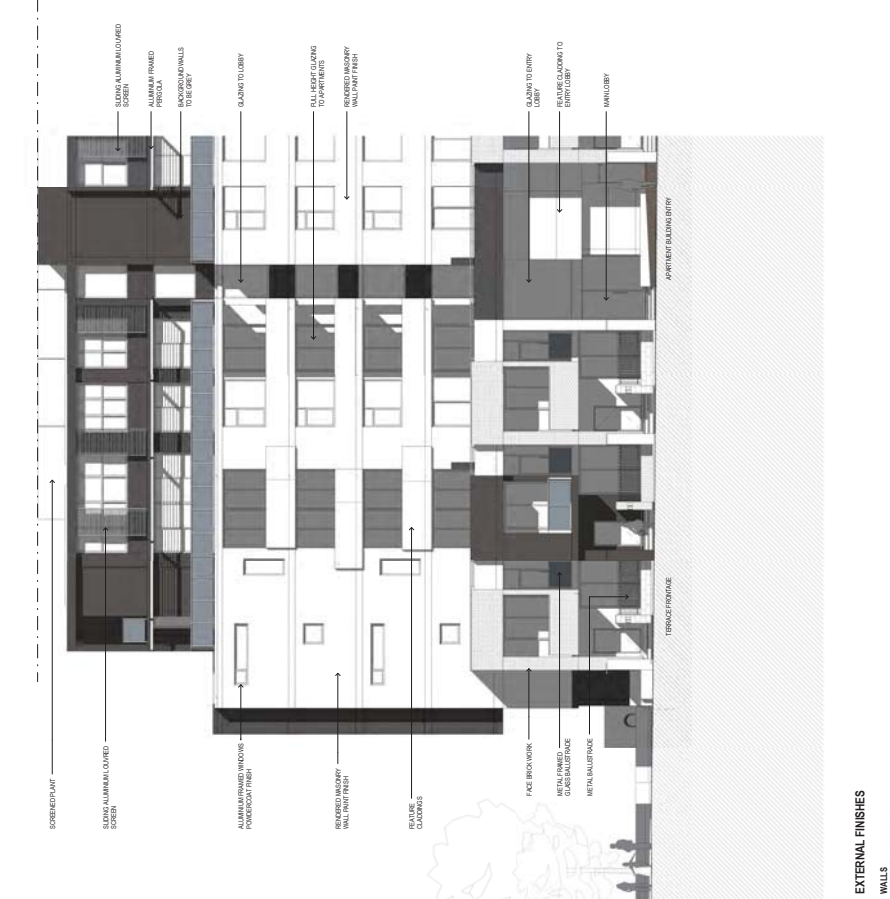
2B-SOUTH



2A-NORTH



TYPICAL SECTION - 2B SOUTH



PART ELEVATION - WEST

EXTERNAL FINISHES

- WALLS**
- BRT Face brick work
 - SP1 Colourback glass sparable panel
 - PF2 Applied wall finish - Dark Grey or similar
 - FC1 Feature cladding
 - MR1 Metal Roof Cladding
 - ST1 Stone finish
- GLAZING**
- GL1 Clear glass double frame fixed
 - SP1 Colourback glass sparable panel
 - GB1 Clear glass frameless sliding
 - MB1 Metal framed balustrading
 - MB2 Metal framed balustrading
- SCREENINGS**
- SC1 External louvre screens - sliding
 - SC2 External louvre screens - fixed
 - MC1 Metal Pergola

CLIENT: mirvac

PROJECT: Harold Park - Precinct 2
 Geelong, NSW

DESIGNER: Mirvac Design

ARCHITECT: HASSELL

ENGINEER: JCB

DATE: 11/10

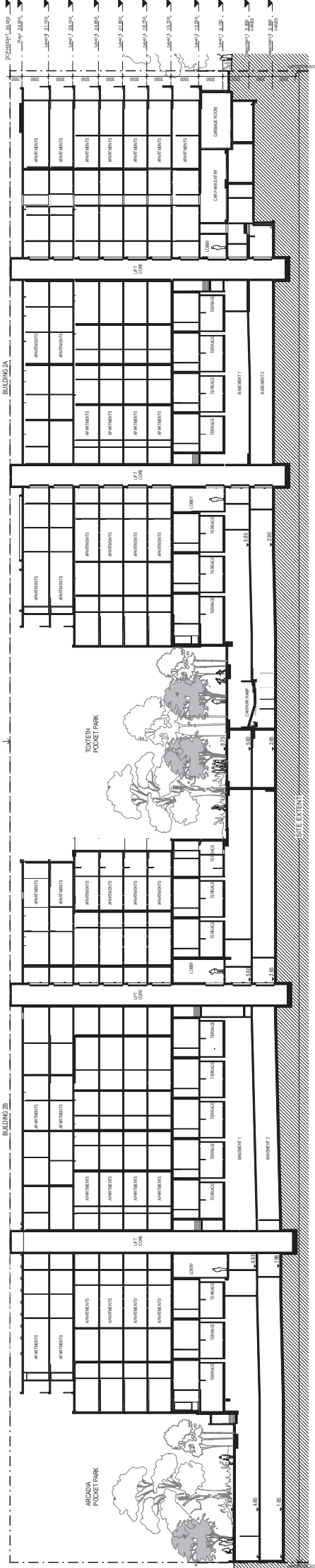
JOB NO: 1752

DATE: Feb 12

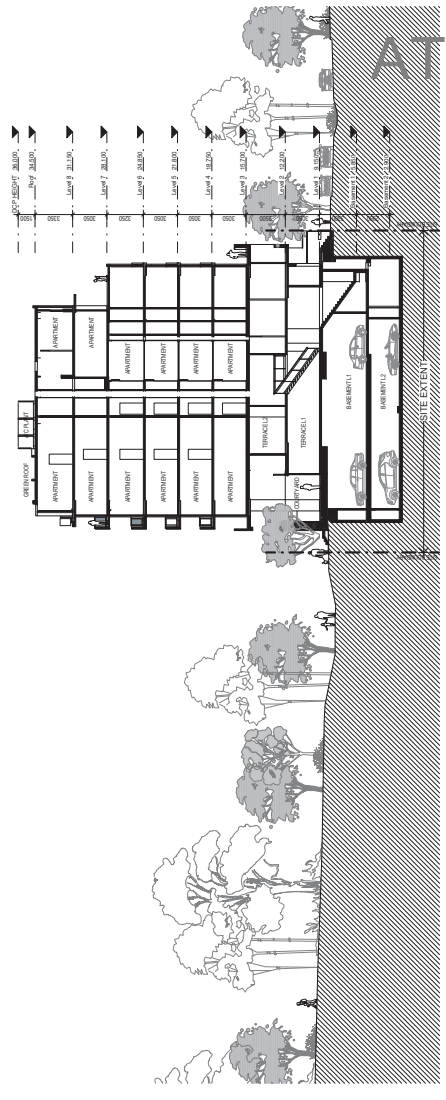
DRAWN BY: DA-P2-22 rev: D

NOTES:

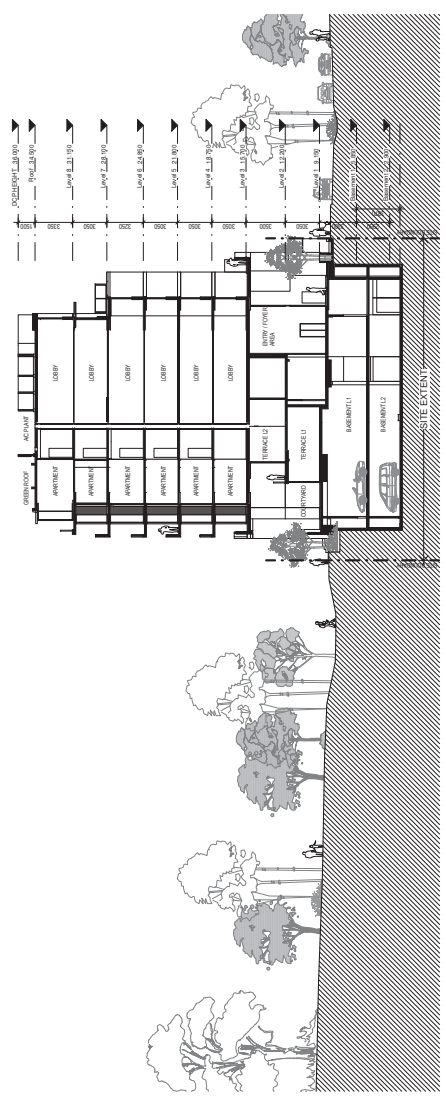
1. All dimensions are in millimetres unless otherwise stated.
2. All materials and finishes are to be as specified in the schedule of finishes.
3. All materials and finishes are to be as specified in the schedule of finishes.
4. All materials and finishes are to be as specified in the schedule of finishes.
5. All materials and finishes are to be as specified in the schedule of finishes.
6. All materials and finishes are to be as specified in the schedule of finishes.
7. All materials and finishes are to be as specified in the schedule of finishes.
8. All materials and finishes are to be as specified in the schedule of finishes.
9. All materials and finishes are to be as specified in the schedule of finishes.
10. All materials and finishes are to be as specified in the schedule of finishes.



SECTION A



SECTION C



NOTES:

1. This drawing is a preliminary design and is not to be used for construction without the approval of the relevant authorities.
2. All dimensions are in millimeters unless otherwise stated.
3. All levels are in meters above sea level unless otherwise stated.
4. The client is responsible for ensuring that all necessary permits and approvals are obtained before construction commences.
5. The architect is not responsible for any errors or omissions in this drawing.

NO.	DATE	REVISION
01	10/10/2023	Issue for Development Application
02	15/10/2023	Revised to include landscape
03	20/10/2023	Revised to include structural

PROJECT: Harold Park - Precinct 2
CLIENT: NSW



CLIENT:
 mirvac
 100 Pitt Street, Sydney NSW 1500
 Tel: 02 9250 9000
 Fax: 02 9250 9001
 Email: info@mirvac.com.au

DESIGN:
 Mirvac Design
 100 Pitt Street, Sydney NSW 1500
 Tel: 02 9250 9000
 Fax: 02 9250 9001
 Email: info@mirvac.com.au

ARCHITECT:
 Hassell
 100 Pitt Street, Sydney NSW 1500
 Tel: 02 9250 9000
 Fax: 02 9250 9001
 Email: info@hassell.com.au

ENGINEER:
 Sections Sheet 1

DATE: 10/10/23
PROJECT NO.: 1752
DATE: 10/10/23
SCALE: 1:100
DRAWN TO: DA-P2-23

ATTACHMENT A



Landscape Open Space	
Site area	5,141,901 sqm
Landscaped open space	1,653,310 sqm
Total	32.15%

DISCLAIMER
 This document is the property of Mirvac and is not to be distributed, copied, or used in any way without the prior written consent of Mirvac. It is intended for the use of the client and is not to be used for any other purpose. The information contained herein is confidential and may be subject to legal proceedings. The information contained herein is not to be used for any other purpose. The information contained herein is not to be used for any other purpose.

DATE
 18/08/2012

REV
 0
 1
 2
 3
 4

REVISION
 0
 1
 2
 3
 4

PROJECT
 Harold Park - Precinct 2
 Geelong, NSW

CLIENT


ARCHITECT


LANDSCAPE ARCHITECT


ISSUE
 DEVELOPMENT APPLICATION
Area Calculations - Open Space

DATE
 18/08/2012

JOB NO
 1752

DATE
 Feb 12

SCALE
 @ B1 As Indicated

DRAWING NO
 DA-P2-33

REV
 D

ATTACHMENT A



② Part Elevation - Street Side - Building B
1:75



① Part Elevation - Street Side - Building A
1:75

Legend

	FACE BRICKWORK
	PAINT FINISH - WHITE OR SIMILAR
	PAINT FINISH - DARK GREY OR SIMILAR
	FEATURE CLADDING TYPE 1
	FEATURE CLADDING TYPE 2
	STONE FINISH
	CLEAR GLASS
	COLORBACK GLASS
	METAL FRAMING - GREY OR SIMILAR
	METAL SCREEN
	PLANT SCREEN

DISCLAIMER
 1. This document is the property of Hassell and is not to be distributed, copied, or used in any way without the written consent of Hassell.
 2. This document is for the use of the client only and is not to be used for any other purpose.
 3. Hassell is not responsible for any errors or omissions in this document.
 4. Hassell is not responsible for any changes to this document without the written consent of Hassell.
 5. Hassell is not responsible for any legal or regulatory requirements that may apply to this document.

DATE
 18/08/2012
REVISED
 18/08/2012
REVISIONS
 1. Initial Design Development
 2. Final Design Development
 3. Final Design Development
 4. Final Design Development

PROJECT
 Harold Park - Precinct 2
 Geelong, NSW

CLIENT
 mirvac

ARCHITECT
 Mirvac Design
 11/11/2012
 11/11/2012
 11/11/2012

ARCHITECT
 Hassell
 11/11/2012
 11/11/2012
 11/11/2012

DATE
 18/08/2012
REVISED
 18/08/2012
REVISIONS
 1. Initial Design Development
 2. Final Design Development
 3. Final Design Development
 4. Final Design Development

DATE
 18/08/2012
REVISED
 18/08/2012
REVISIONS
 1. Initial Design Development
 2. Final Design Development
 3. Final Design Development
 4. Final Design Development

drawn to: DA-P2-46 rev: D